

BLACKSBURG, VIRGINIA

AL-5475 (FAA)

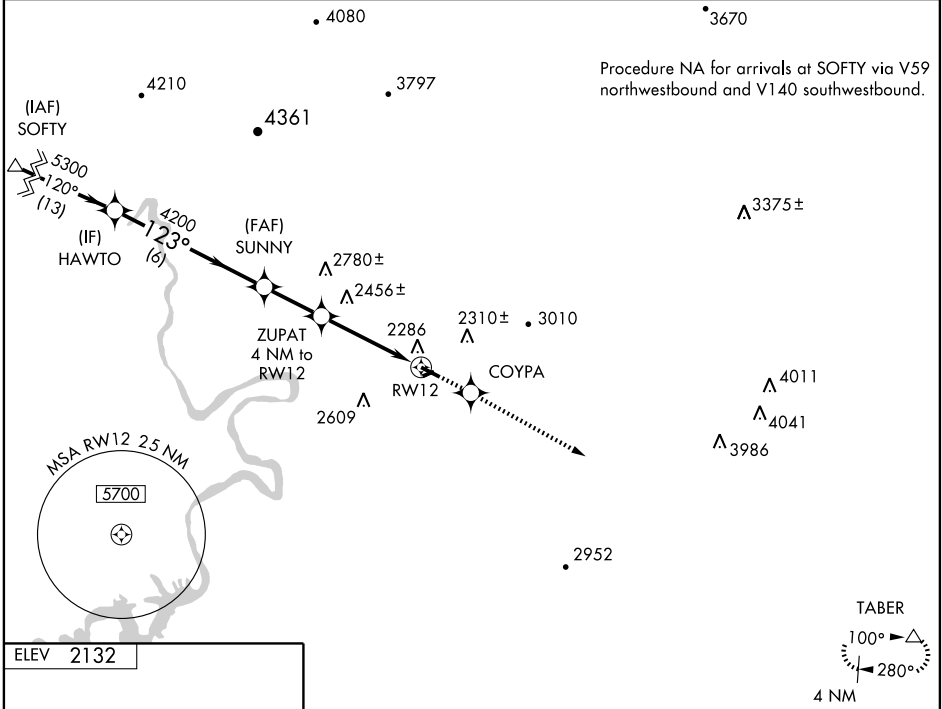
WAAS Ch 60926 W12A	APP CRS 123°	Rwy Idg TDZE 2113 Apt Elev 2132	4539
--	------------------------	---	-------------

RNAV (GPS) RWY 12

BLACKSBURG/VIRGINIA TECH/MONTGOMERY EXECUTIVE (BCB)

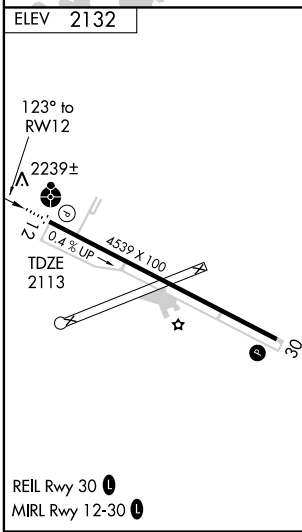
<p>▼ Baro-VNAV NA below -19°C (-2°F). ▲ DME/DME RNP-0.3 NA. Inoperative table does not apply.</p>	<p>ODALS ⬇</p>	<p>MISSED APPROACH: Climb to 5500 direct COYPA and via 125° track to TABER and hold.</p>
---	--------------------	--

AWOS-3 133.325	ROANOKE APP CON 126.9 339.8	ROANOKE CLNC DEL 124.85	UNICOM 123.05 (CTAF) 📻
--------------------------	---------------------------------------	-----------------------------------	----------------------------------



NE-3, 08 MAY 2008 to 05 JUN 2008

NE-3, 08 MAY 2008 to 05 JUN 2008



	HAWTO	SUNNY	ZUPAT 4 NM to RW12	RW12
	5300	2780±	2456±	2132
	Procedure Turn NA	GS 3.00° TCH 45		
	VGSi and RNAV glidepath not coincident.			
	6 NM	2.3 NM	4 NM	
CATEGORY	A	B	C	D
LPV DA	2548-1½	435 (500-1½)		NA
LNAV/VNAV DA	2539-1½	426 (500-1½)		NA
LNAV MDA	2700 - 1	587 (600-1)	2700 - 1½ 587 (600-1½)	NA
CIRCLING	2800 - 1½	668 (700-1½)	2800 - 1¾ 668 (700-1¾)	NA

BLACKSBURG, VIRGINIA
Orig 08101

BLACKSBURG/VIRGINIA TECH/MONTGOMERY EXECUTIVE (BCB)
37°12'N - 80°24'W
RNAV (GPS) RWY 12

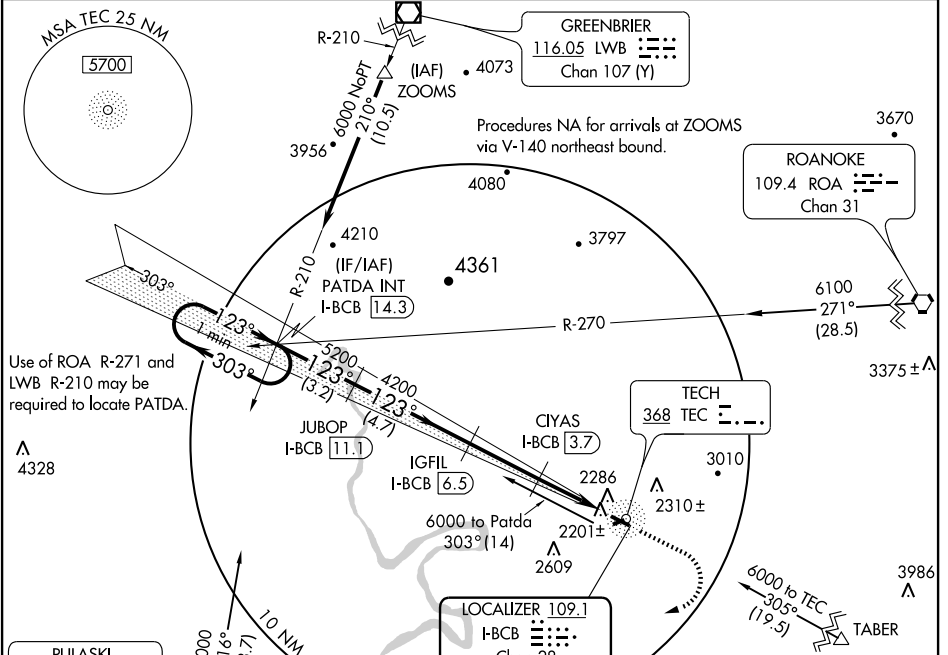
LOC/DME RWY 12

LOC/DME I-BCB 109.1 Chan 28	APP CRS 123°	Rwy Idg 4539	TDZE 2113	Apt Elev 2132
--	------------------------	-----------------	--------------	------------------

BLACKSBURG/VIRGINIA TECH/MONTGOMERY EXECUTIVE (BCB)

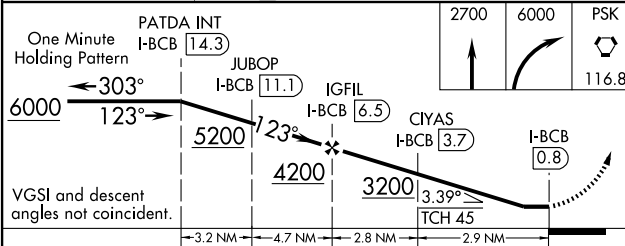
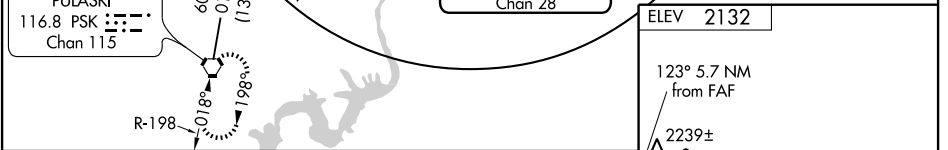
Inoperative table does not apply.	ODALS 	MISSED APPROACH: Climb to 2700 then climbing right turn to 6000 direct PSK VORTAC and hold.
NA When VGSI inop, procedure NA at night.		

AWOS-3 133.325	ROANOKE APP CON 126.9 339.8	ROANOKE CLNC DEL 124.85	UNICOM 123.05 (CTAF)
--------------------------	---------------------------------------	-----------------------------------	--------------------------------



NE-3, 08 MAY 2008 to 05 JUN 2008

NE-3, 08 MAY 2008 to 05 JUN 2008



CATEGORY	A	B	C	D
S-12	2460-1 347 (400-1)			NA
CIRCLING	2800-1 668 (700-1)		2800-1¾ 668 (700-1¾)	NA
REIL Rwy 30	MIRL Rwy 12-30			
Knots	60	90	120	150 180
Min:Sec				

LOC/DME RWY 12

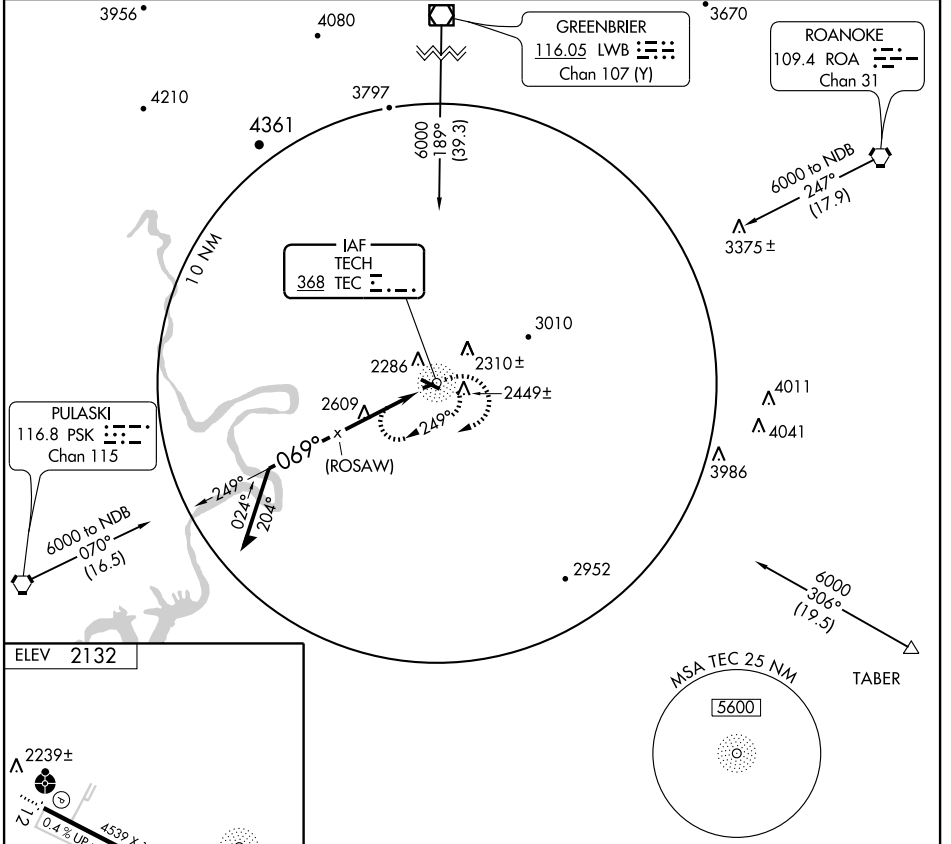
NDB or GPS-A

BLACKSBURG/VIRGINIA TECH/MONTGOMERY EXECUTIVE (BCB)

NDB TEC 368	APP CRS 069°	Rwy Idg TDZE Apt Elev	N/A N/A 2132
-----------------------	------------------------	-----------------------------	---------------------------

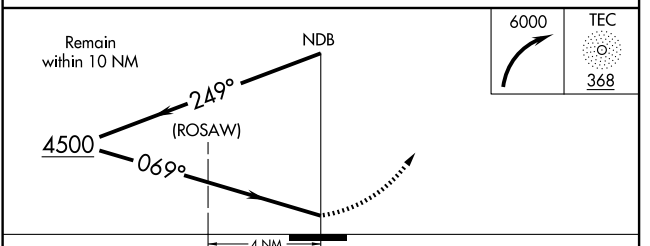
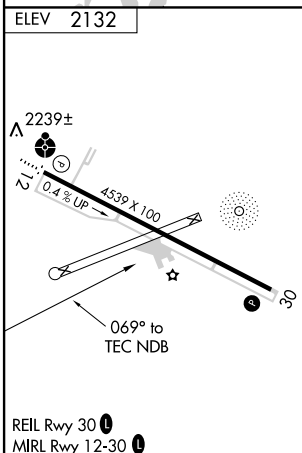
<p>▽ ▲ NA</p>		<p>MISSED APPROACH: Climbing right turn to 6000 in TEC NDB holding pattern.</p>	
---------------------------------	--	---	--

AWOS-3 133.325	ROANOKE APP CON 126.9 339.8	ROANOKE CLNC DEL 124.85	UNICOM 123.05 (CTAF)
--------------------------	---------------------------------------	-----------------------------------	--------------------------------



NE-3, 08 MAY 2008 to 05 JUN 2008

NE-3, 08 MAY 2008 to 05 JUN 2008



CATEGORY	A	B	C	D
CIRCLING	3080-1¼	948 (1000-1¼)	3080-2¾ 948 (1000-2¾)	NA

NDB or GPS-A



INSTRUMENT APPROACH PROCEDURE CHARTS

A IFR ALTERNATE AIRPORT MINIMUMS

Standard alternate minimums for non precision approaches are 800-2 (NDB, VOR, LOC, TACAN, LDA, VORTAC, VOR/DME, ASR or WAAS LNAV); for precision approaches 600-2 (ILS or PAR). Airports within this geographical area that require alternate minimums other than standard or alternate minimums with restrictions are listed below. NA - means alternate minimums are not authorized due to unmonitored facility or absence of weather reporting service. Civil pilots see FAR 91. IFR Alternate Airport Minimums: Ceiling and Visibility Minimums not applicable to USA/USN/USAF. Pilots must review the IFR Alternate Airport Minimums Notes for alternate airfield suitability.

NAME ALTERNATE MINIMUMS

ABERDEEN PROVING GROUND, MD
PHILLIPS AAF (KAPG) **NDB Rwy 22**
VOR Rwy 22
VOR/DME Rwy 22
RNAV (GPS) Rwy 22

NA when control tower closed.

BALTIMORE, MD

BALTIMORE-WASHINGTON
INTL THURGOOD MARSHALL **VOR Rwy 10**
Categories A,B, 1100-2; Category C,D 1100-3.

MARTIN STATE **ILS or LOC Rwy 33¹²**
LOC Rwy 15²
VOR/DME or TACAN Z Rwy 15⁴

¹ILS, Category D, 700-2.

²NA when control tower closed.

³NA when local weather not available.

⁴Categories A,B, 900-2; Category C, 900-2½; Category D 900-2¼.

BLACKSBURG, VA

VIRGINIA TECH/MONTGOMERY
EXECUTIVE **RNAV (GPS) Rwy 12**
NA when local weather not available.

CHARLOTTESVILLE, VA

CHARLOTTESVILLE-
ALBEMARLE **ILS or LOC Rwy 3¹²**
RNAV (GPS) Rwy 3³⁴
RNAV (GPS) Y Rwy 21³⁵
RNAV (GPS) Z Rwy 21³⁴

¹NA when control tower closed.

²ILS, Categories A,B, 800-2; Category C, 800-2½; Category D, 1000-3. LOC, Category C, 800-2½; Category D, 1000-3.

³NA when local weather not available.

⁴Category D, 1000-3.

⁵Category C, 800-2¼; Category D, 1000-3.

NAME ALTERNATE MINIMUMS

CULPEPER, VA
CULPEPER RGNL **LOC Rwy 4¹**
RNAV (GPS) Rwy 4²
RNAV (GPS) Rwy 22²
VOR-A²

¹NA when FBO closed.

²NA when local weather not available.

DANVILLE, VA

DANVILLE RGNL **VOR Rwy 20**
Category C, 800-2¼; Category D, 800-2½.

DUBLIN, VA

NEW RIVER VALLEY **VOR or GPS-A**
Category D, 800-2¼.

EASTON, MD

EASTON/
NEWNAM FIELD **ILS or LOC/DME Rwy 4¹**
RNAV (GPS) Rwy 4

NA when local weather not available.

¹ILS, LOC, NA when control tower closed.

FREDERICK, MD

FREDERICK MUNI **RNAV (GPS) Rwy 5¹²**
RNAV (GPS) Y Rwy 23¹
RNAV (GPS) Z Rwy 23³

¹Category D, 800-2½.

²NA when local weather not available.

³Categories A,B,C,D, 800-2½.

GAITHERSBURG, MD

MONTGOMERY COUNTY
AIRPARK **NDB Rwy 14**
Categories A, B, 900-2; Category C, 900-2½; Category D, 900-2¼.

GALAX/HILLSVILLE, VA

TWIN COUNTY **RNAV (GPS) Rwy 1**
RNAV (GPS) Rwy 19

NA when local weather not available.

08 MAY 2008 to 05 JUN 2008

08 MAY 2008 to 05 JUN 2008





ALTERNATE MINS



NAME ALTERNATE MINIMUMS
GEORGETOWN, DE
SUSSEX COUNTY **RNAV (GPS) Rwy 4**
RNAV (GPS) Rwy 22
NA when local weather not available.

HAGERSTOWN, MD
HAGERSTOWN RGNL-RICHARD A.
HENSON FIELD **ILS or LOC Rwy 9¹²**
ILS or LOC Rwy 27¹²
VOR or GPS Rwy 9³

¹NA when local weather not available.
²NA when control tower closed.
³NA when control zone not in effect except for operators with approved weather reporting service.

LEESBURG, VA
LEESBURG EXECUTIVE .. **RNAV (GPS) Rwy 17**
LPV, Category D, 700-2.

LEONARDTOWN, MD
ST. MARY'S COUNTY
RGNL **RNAV (GPS) Rwy 11**
NA when local weather not available.

LYNCHBURG, VA
LYNCHBURG RGNL/PRESTON GLENN
FIELD **ILS or LOC Rwy 4¹²**
RNAV (GPS) Rwy 4³
RNAV (GPS) Rwy 22³
VOR/DME Rwy 22⁴
VOR Rwy 4³

¹ILS, LOC, NA when control tower closed.
²ILS, Categories A, B, 800-2; Category C, 900-2½, Category D, 900-2¾. LOC, Category C, 900-2½, Category D, 900-2¾.
³Category C, 900-2½; Category D, 900-2¾.
⁴Categories A, B, 900-2; Category C, 900-2½, Category D, 900-2¾.

MANASSAS, VA
MANASSAS RGNL/HARRY P DAVIS
FIELD **ILS Rwy 16L**
RNAV (GPS) Rwy 16L
NA when control tower closed.

MARION/WYTHEVILLE, VA
MOUNTAIN EMPIRE **RNAV (GPS) Rwy 26**
NA when local weather not available.
Category C, 800-2¼.

MARTINSVILLE, VA
BLUE RIDGE **RNAV (GPS) Rwy 30**
NA when local weather not available.
Category D, 800-2¼.

NAME ALTERNATE MINIMUMS
MELFA, VA
ACCOMACK COUNTY **RNAV (GPS) Rwy 3**
RNAV (GPS) Rwy 21
NA when local weather not available.

MIDDLETOWN, DE
SUMMIT **RNAV (GPS) Rwy 17**
RNAV (GPS) Rwy 35
NA when local weather not available.

NEWPORT NEWS, VA
NEWPORT NEWS/WILLIAMSBURG
INTL **ILS Rwy 7**
ILS or LOC Rwy 25
LOC/DME Rwy 20¹
NA when control tower closed.
¹NA when control tower closed.

OCEAN CITY, MD
OCEAN CITY MUNI **RNAV (GPS) Rwy 2¹**
VOR-A²
¹NA when local weather not available.
²Categories A, B, 900-2; Category C, 900-2½; Category D, 900-2¾.

PETERSBURG, VA
DINWIDDIE COUNTY **RNAV (GPS) Rwy 5**
RNAV (GPS) Rwy 23
VOR Rwy 23
NA when local weather not available.

RICHLANDS, VA
TAZEWELL COUNTY **RNAV (GPS) Rwy 25**
NA when local weather not available.

RICHMOND, VA
RICHMOND INTL **ILS or LOC Rwy 16**
ILS, Categories A, B, 900-2, Category C, 900-2¾, Category D, 900-3.
LOC, Categories A, B, 900-2, Category C, 900-2¾, Category D, 900-3.

RICHMOND/ASHLAND, VA
HANOVER
COUNTY MUNI **RNAV (GPS) Rwy 16¹**
VOR Rwy 16²

¹NA when local weather not available.
²Category C, 800-2¼, Category D, 800-2½.

08 MAY 2008 to 05 JUN 2008

08 MAY 2008 to 05 JUN 2008



ALTERNATE MINS



ALTERNATE MINS

E3



NAME ALTERNATE MINIMUMS

ROANOKE, VA

ROANOKE RGNL/WOODRUM

FIELD ILS or LOC Rwy 33¹²
LDA Rwy 6²
VOR/NDB Rwy 33³

¹ILS, Categories A,B, 800-2; Category C, 800-2½; Category D, 800-2½. LOC, Category C, 800-2½; Category D, 800-2½.

²Categories A,B, 1600-2; Categories C,D, 1600-3.

³Categories A,B, 1400-2; Categories C,D, 1400-3.

SALISBURY, MD

SALISBURY-OCEAN CITY

WICOMICO RGNL VOR Rwy 23
Category D, 800-2½.

STAUNTON-WAYNESBORO-

HARRISONBURG, VA

SHENANDOAH VALLEY

RGNL ILS Rwy 5
NDB or GPS Rwy 5

NA when control zone not in effect.

SUFFOLK, VA

SUFFOLK EXECUTIVE RNAV (GPS) Rwy 4
RNAV (GPS) Rwy 7

NA when local weather not available.

WALLOPS ISLAND, VA

WALLOPS FLIGHT

FACILITY VOR/DME or TACAN Rwy 10
Categories A,B, 900-2; Category C, 900-2½;
Category D, 900-2½.

NAME ALTERNATE MINIMUMS

WASHINGTON, DC

WASHINGTON

DULLES INTL ILS or LOC/DME Rwy 12¹
ILS or LOC Rwy 1R²
ILS or LOC Rwy 19L¹
RNAV (GPS) Y Rwy 19L³
RNAV (GPS) Y Rwy 19R³

¹ILS, Categories A, B, C, 700-2.

²ILS, 700-2.

³Category D, 800-2½.

RONALD REAGAN

WASHINGTON NATIONAL ILS Rwy 1¹
LDA/DME Rwy 19²
RNAV (GPS) Rwy 33³
ROSSLYN LDA Rwy 19, 1100-3
VOR DME RNAV or GPS Rwy 4²
VOR/DME or GPS Rwy 15⁴
VOR/DME or GPS Rwy 19⁵
VOR Rwy 1²

¹ILS, Categories A, B,C, 700-2; Category D, 700-2½. LOC, Category D, 800-2½.

²Category D, 800-2½.

³Categories A,B,C,D, 800-2½.

⁴Categories A,B, 1000-2; Category C, 1000-2½; Category D, 1000-3.

⁵Categories A,B, 1000-2; Categories C,D, 1000-3.

WILMINGTON, DE

NEW CASTLE ILS or LOC Rwy 1¹²
VOR Rwy 27³

¹NA when control tower closed.

²NA when local weather not available.

³Category D, 800-2½.

WISE, VA

LONESOME PINE RNAV (GPS) Rwy 6¹²
RNAV (GPS) Rwy 24³

¹NA when local weather not available.

²Category D, 800-2½.

³Category C, 800-2½; Category D, 900-2½.

08 MAY 2008 to 05 JUN 2008

08 MAY 2008 to 05 JUN 2008



ALTERNATE MINS

E3





INSTRUMENT APPROACH PROCEDURE CHARTS

IFR TAKE-OFF MINIMUMS AND (OBSTACLE) DEPARTURE PROCEDURES

Civil Airports and Selected Military Airports

ALL USERS: Airports that have Departure Procedures (DPs) designed specifically to assist pilots in avoiding obstacles during the climb to the minimum enroute altitude, and/or airports that have civil IFR take-off minimums other than standard, are listed below. Take-off Minimums and Departure Procedures apply to all runways unless otherwise specified. Altitudes, unless otherwise indicated, are minimum altitudes in MSL.

DPs specifically designed for obstacle avoidance are referred to as Obstacle Departure Procedures (ODPs) and are described below in text, or published separately as a graphic procedure. If the (Obstacle) DP is published as a graphic procedure, its name will be listed below, and it can be found in either this volume (civil), or a separate Departure Procedure volume (military), as appropriate. Users will recognize graphic obstacle DPs by the term "(OBSTACLE)" included in the procedure title; e.g., TETON TWO (OBSTACLE). If not assigned a SID or radar vector by ATC, an ODP may be flown without ATC clearance to ensure obstacle clearance.

Graphic DPs designed by ATC to standardize traffic flows, ensure aircraft separation and enhance capacity are referred to as "Standard Instrument Departures (SIDs)". SIDs also provide obstacle clearance and are published under the appropriate airport section. ATC clearance must be received prior to flying a SID.

CIVIL USERS NOTE: Title 14 Code of Federal Regulations Part 91 prescribes standard take-off rules and establishes take-off minimums for certain operators as follows: (1) Aircraft having two engines or less - one statute mile. (2) Aircraft having more than two engines - one-half statute mile. These standard minima apply in the absence of any different minima listed below.

MILITARY USERS NOTE: Civil (nonstandard) take-off minima are published below. For military take-off minima, refer to appropriate service directives.

NAME TAKE-OFF MINIMUMS

NAME TAKE-OFF MINIMUMS

ABINGDON, VA

ANNAPOLIS, MD

VIRGINIA HIGHLANDS

LEE

TAKE-OFF MINIMUMS: Rwys 6, 24, 300-1. DEPARTURE PROCEDURE: Climb straight ahead to 5000 when departing NE, or 4000 when departing SW, before proceeding on course.

TAKE-OFF MINIMUMS: Rwy 30, 300-1 or std. with a min. climb of 410' per NM to 400. DEPARTURE PROCEDURE: Rwy 12, climb runway heading to 700 before proceeding on course. Rwy 30, climb runway heading to 1000 before proceeding right on course. Climb runway heading to 700 before proceeding left on course. NOTE: Rwy 12, cross departure end of runway at or above 35' AGL/66' MSL. Rwy 30, trees, 1433' from departure end of runway, 85' left of centerline, 100' AGL/139' MSL. Cross departure end of runway at or above 35' AGL/66' MSL.

ANDREWS AFB/NAF (KADW/KNSF)

CAMP SPRINGS, MD. 07326

TAKE-OFF OBSTACLES: Rwy 1L, trees 2972' to 3085' from DER, 765' to 906' right of centerline, 93' AGL/355' MSL. Rwy 1R, trees 1512' from DER, 856' right of centerline, 74' AGL/336' MSL; trees 2254' from DER, 645' left of centerline, 93' AGL/355' MSL; trees 2629' from DER, 1095' left of centerline, 93' AGL/355' MSL; trees 2882' from DER, 364' left of centerline, 104' AGL/362' MSL. Rwy 19L, terrain 267' from DER, 580' left of centerline, 261' MSL; trees 2650' to 2874' from DER, 946' to 1113' right of centerline, 91' AGL/334' MSL. Rwy 19R, trees 2650' to 2873' from DER, 887' to 1054' left of centerline, 91' AGL/334' MSL; tower 4630' from DER, 1664' right of centerline, 108' AGL/377' MSL.

08 MAY 2008 to 05 JUN 2008

08 MAY 2008 to 05 JUN 2008





BALTIMORE, MD

BALTIMORE/WASHINGTON INTL THURGOOD MARSHALL

TAKE-OFF MINIMUMS: **Rwy 4**, 300-1½ or std. w/ min. climb of 210' per NM to 500.

DEPARTURE PROCEDURE: **Rwy 4**, climb heading 044° to 800 before proceeding on course. **Rwy 28**, climb heading 285° to 900 before proceeding on course. **Rwy 33L**, climb heading 320° to 2000 before proceeding on course. **Rwy 33R**, climb heading 005° to 1900 before proceeding on course.

NOTE: **Rwy 4**, rod on lighted pole 1921' from departure end of runway, 329' right of centerline, 58' AGL/197' MSL. Light on pole 2177' from departure end of runway, 294' left of centerline, 58' AGL/197' MSL. Light on pole 1755' from departure end of runway, 482' right of centerline, 47' AGL/186' MSL. Tree 2370' from departure end of runway, 481' right of centerline, 60' AGL/199' MSL. Tank 6635' from departure end of runway, 2265' right of centerline, 122' AGL/316' MSL. Tank 7534' from departure end of runway, 2274' left of centerline, 173' AGL/338' MSL. **Rwy 10**, building 52' from departure end of runway, 319' left of centerline, 13' AGL/133' MSL. **Rwy 15L**, multiple trees beginning 648' from departure end of runway, 617' left of centerline, up to 68' AGL/167' MSL. Light on pole 921' from departure end of runway, 618' left of centerline, 62' AGL/161' MSL. **Rwy 15R**, multiple trees beginning 1144' from departure end of runway, 740' right of centerline, up to 53' AGL/172' MSL. **Rwy 22**, terrain beginning 111' from departure end of runway, 29' right of centerline, up to 171' AGL. Terrain 365' from departure end of runway, 137' left of centerline, 158' MSL. **Rwy 28**, tree 1392' from departure end of runway, 736' left of centerline, 77' AGL/176' MSL. **Rwy 33L**, building 4693' from departure end of runway, 874' right of centerline, 127' AGL/266' MSL. Tree 2250' from departure end of runway, 843' right of centerline, 66' AGL/205' MSL. Microwave antenna on building, 4725' from departure end of runway, 907' right of centerline, 126' AGL/265' MSL. Fence 203' from departure end of runway, 517' right of centerline, 9' AGL/140' MSL. **Rwy 33R**, numerous trees beginning 2925' from departure end of runway, 321' left of centerline, up to 70' AGL/289' MSL. Numerous trees beginning 975' from departure end of runway, 116' right of centerline, up to 63' AGL/262' MSL. Light on pole 2384' from departure end of runway, 837' right of centerline, 55' AGL/254' MSL. Building 998' from departure end of runway, 654' left of centerline, 24' AGL/183' MSL. Light on pole 3869' from departure end of runway, 603' left of centerline, 72' AGL/251' MSL. Light on pole 2736' from departure end of runway, 247' right of centerline, 17' AGL/216' MSL. Pole 3781' from departure end of runway, 370' right of centerline, 40' AGL/242' MSL. Signal 2453' from departure end of runway, 904' left of centerline, 45' AGL/204' MSL.

BALTIMORE, MD (CON'T)

MARTIN STATE

TAKE-OFF MINIMUMS: **Rwy 15**, 800-2 or std. with a min. climb of 300' per NM to 1000. **Rwy 33**, 1300-2 or std. with a min. climb of 340' per NM to 1700'.

DEPARTURE PROCEDURE: **Rwy 15**, climb runway heading to 1000 before proceeding on course; or when directed by ATC, climbing right turn heading 190° to 1000 before proceeding on course.

NOTE: **Rwy 15**, trees 1960' from departure end of runway 684' left of centerline, 78' AGL/88' MSL, trees 3395' from departure end of runway, 585' left of centerline, 92' AGL/102' MSL. **Rwy 33**, pole 1553' from departure end of runway, across centerline, 68' AGL/90' MSL. Trees 2342' from departure end of runway, across centerline 86' AGL/108' MSL.

BLACKSBURG, VA

VIRGINIA TECH/MONTGOMERY EXECUTIVE (BCB)

AMDT 4 08073 (FAA)

TAKE-OFF MINIMUMS: **Rwy 12**, 400-1½ or std. w/ min. climb of 563' per NM to 2700.

DEPARTURE PROCEDURE: **Rwy 12**, climbing right turn direct PSK VORTAC to 3500 before proceeding on course. **Rwy 30**, climbing left turn direct PSK VORTAC to 4100 before proceeding on course.

NOTE: **Rwy 12**, bushes and trees beginning 275' from departure end of runway, 154' left of centerline, up to 100' AGL/2239' MSL. Trees beginning 5108' from departure end of runway, 1363' left of centerline, up to 100' AGL/2499' MSL. Trees beginning 3165' from departure end of runway, 1324' right of centerline up to 100' AGL/2279' MSL. **Rwy 30**, trees beginning 90' from departure end of runway, 461' left of centerline, up to 46' AGL/2140' MSL. Fence and obstruction light pole beginning 546' from departure end of runway, 161' left of centerline, up to 12' AGL/2139' MSL. Vehicle on road beginning 567' from departure end of runway, 310' left of centerline, 24' AGL/2137' MSL. Trees beginning 2080' from departure end of runway, 788' left of centerline, up to 100' AGL/2201' MSL. Fence, 861' from departure end of runway, 52' right of centerline, up to 12' AGL/2135' MSL. Trees beginning 539' from departure end of runway, 326' right of centerline, up to 40' AGL/2153' MSL. Trees beginning 1328' from departure end of runway, 117' right of centerline, up to 100' AGL/2182' MSL terrain beginning 330' from departure end of runway, 366' right of centerline, up to 2138' MSL pole and antenna beginning 1149' from departure end of runway, 391' right of centerline, up to 40' AGL/2151' MSL.

08 MAY 2008 to 05 JUN 2008

08 MAY 2008 to 05 JUN 2008





BLACKSTONE, VA

ALLEN C. PERKINSON/BAAF

TAKE-OFF MINIMUMS: **Rwy 1**, 1000-2 or std. with a min. climb of 280' per NM to 1700. **Rwy 4**, 1000-2 or std. with a min. climb of 220' per NM to 1700. **Rwy 19**, NA.

DEPARTURE PROCEDURE: **Rwy 1**, climb heading 010° to 1700 before proceeding on course. **Rwy 4**, climb heading 039° to 1700 before proceeding on course.

Rwy 22, climb heading 208° to 900 before proceeding on course. **Rwy 22**, climb heading 208° to 900 before proceeding on course.

NOTE: **Rwy 4**, 50' AGL tree, 150' from departure end of runway, 450' right of centerline. **Rwy 22**, 66' AGL tree, 175' from departure end of runway, 450' left of centerline. Do not fly over ammunition dump 1.1 NM SW of Rwy 4.

BRIDGEWATER, VA

BRIDGEWATER AIRPARK

TAKE-OFF MINIMUMS: **Rwy 15**, 700-1. **Rwy 33**, 700-2. DEPARTURE PROCEDURE: All aircraft climb in VBW holding pattern (SW, right turns, 035° inbound) to 4000 before proceeding on course.

BROOKNEAL, VA

BROOKNEAL/CAMPBELL COUNTY

NOTE: **Rwy 6**, multiple trees beginning 569' from departure end of runway, 252' right of centerline, up to 100' AGL/689' MSL. **Rwy 24**, multiple trees beginning 334' from departure end of runway, 286' right of centerline, up to 100' AGL/679' MSL. Multiple trees beginning 1377' from departure end of runway, 850' left of centerline, up to 100' AGL/719' MSL.

CAMBRIDGE, MD

CAMBRIDGE-DORCHESTER

TAKE-OFF MINIMUMS: **Rwy 34**, 300-1.

CHARLOTTESVILLE, VA

CHARLOTTESVILLE-ALBEMARLE

TAKE-OFF MINIMUMS: **Rwy 3**, 600-3 or std. with a min. climb of 300' per NM to 3000.

DEPARTURE PROCEDURE: **Rwys 3, 21**, climb runway heading to 4000 before proceeding on course.

CHASE CITY, VA

CHASE CITY MUNI

NOTE: **Rwy 18**, trees beginning 191' from departure end of runway, 116' left of centerline, up to 100' AGL/609' MSL. Multiple trees beginning 327' from departure end of runway, 133' right of centerline, up to 100' AGL/599' MSL. **Rwy 36**, trees beginning 164' from departure end of runway, 154' right of centerline, up to 100' AGL/649' MSL. Trees beginning 470' from departure end of runway, 124' left of centerline, up to 100' AGL/649' MSL.

CHURCHVILLE, MD

HARFORD COUNTY

TAKE-OFF MINIMUMS: **Rwy 28**, 300-1 or std. with a min. climb of 400' per NM to 600.

NOTE: **Rwy 28**, 100' terrain/trees 1150' from departure end of runway.

CLARKSVILLE, VA

MARKS MUNI

TAKE-OFF MINIMUMS: **Rwy 4**, 600-1 or std. with a min. climb of 260' per NM to 700.

DEPARTURE PROCEDURE: **Rwy 22**, climb runway heading to 1900 before turning.

CLINTON, MD

WASHINGTON EXECUTIVE/HYDE FIELD (W32)

ORIG 08045 (FAA)

NOTES: **Rwy 5**, Vehicle on road beginning 20' from departure end of runway, on centerline, up to 15' AGL/261' MSL. **Rwy 23**, Vehicle on road 23' from departure end of runway, 329' left of centerline, 15' AGL/260' MSL.

COLLEGE PARK, MD

COLLEGE PARK

TAKE-OFF MINIMUMS: **Rwy 15**, 400-2½ or std. w/ min. climb of 486' per NM to 600. **Rwy 33**, 400-2½ or std. w/ min. climb of 433' per NM to 600.

DEPARTURE PROCEDURE: **Rwy 15**, climb heading 149° to 600 before proceeding on course. **Rwy 33**, climb heading 329° to 600 before proceeding on course.

NOTE: **Rwy 15**, trees beginning 2799' from departure end of runway, 570' left of centerline, up to 100' AGL/259' MSL. Antenna 1.1 NM from departure end of runway, 149' left of centerline, 167' AGL/270' MSL. **Rwy 33**, terrain beginning 1 NM from departure end of runway, 3700' right of centerline to 3700' right of centerline, up to 439' MSL. Building 3811' from departure end of runway, 467' right of centerline, 184' AGL/254' MSL. Tower 1.9 NM from departure end of runway, 1447' left of centerline, 255' AGL/405' MSL.

CRISFIELD, MD

CRISFIELD MUNI

TAKE-OFF MINIMUMS: **Rwys 6, 24**, NA-obstacles

DEPARTURE PROCEDURE: **Rwy 14**, climb via heading 142° to 900 before proceeding on course.

Rwy 32, climb via heading 322° to 900 before proceeding on course.

CULPEPER, VA

CULPEPER RGNL (CJR)

ORIG 07354 (FAA)

DEPARTURE PROCEDURE: **Rwy 22**, climb heading 218° to 1000 before turning right.

NOTE: **Rwy 4**, tree 79' from departure end of runway, 418' left of centerline 86' AGL/337' MSL. Vehicle on road 207' from departure end of runway, 367' left of centerline, 15' AGL/330' MSL. Tree 3396' from departure end of runway, 514' right of centerline, 91' AGL/410' MSL. **Rwy 22**, tree 128' from departure end of runway, 332' left of centerline, 25' AGL/334' MSL. Multiple trees beginning 272' from departure end of runway, 179' right of centerline up to 22' AGL/341' MSL. Pole 1480' from departure end of runway, 68' left of centerline, 27' AGL/356' MSL.





TAKE-OFF MINIMUMS AND (OBSTACLE) DEPARTURE PROCEDURES



08101

CUMBERLAND, MD

GREATER CUMBERLAND RGNL

TAKE-OFF MINIMUMS: **Rwy 5**, 1700-2 or std. with a min. climb of 300' per NM to 3400. **Rwy 11**, 1600-2 or std. with a min. climb of 520' per NM to 3400. **Rwy 23**, 1200-2 or std. with a min. climb of 660' per NM to 3400. **Rwy 29**, NA.

DEPARTURE PROCEDURE: **Rwys 5, 11**, climb runway heading to 3400 before proceeding on course. **Rwy 23**, climbing left turn to intercept 177° course from CBE NDB to 3400 before proceeding on course.

DANVILLE, VA

DANVILLE RGNL

TAKE-OFF MINIMUMS: **Rwys 2, 31**, 300-1 or std. with a min. climb of 240' per NM to 1000.

DAVISON AAF (KDAW)

FORT BELVOIR, VA

.....Rwy 32, 300-1*

* Or standard with minimum climb of 380/NM to 500.
TAKE-OFF OBSTACLES: Rwy 32, 63' AGL tree 865' from departure end of rwy, 82' right of centerline.

DOVER AFB (KDOV)

DOVER, DE. 08017

TAKE-OFF OBSTACLES: **Rwy 1**, possible aircraft/vehicles at DER hammerhead just left of rwy centerline, up to 65' AGL/91' MSL. **Rwy 19**, possible aircraft/vehicles at DER hammerhead just right of rwy centerline, up to 65' AGL/91' MSL.

DOVER/CHESWOLD, DE

DELAWARE AIRPARK

NOTE: **Rwy 9**, multiple trees beginning 26' from departure end of runway, 50' left of centerline, up to 100' AGL/149' MSL. Pole line 1151' from departure end of runway, 36' right of centerline, 50' AGL/99' MSL. Multiple trees beginning 815' from departure end of runway, 505' right of centerline, up to 100' AGL/154' MSL. **Rwy 27**, multiple trees beginning 231' from departure end of runway, 85' left of centerline, up to 100' AGL/169' MSL. Multiple trees beginning 829' from departure end of runway, 43' right of centerline, up to 100' AGL/164' MSL.

DUBLIN, VA

NEW RIVER VALLEY

DEPARTURE PROCEDURE: **Rwy 6**, climbing right turn to 5000 heading 120° before proceeding on course.

Rwy 24, climb runway heading to 5000 before proceeding on course.

EASTON, MD

EASTON/NEWNAM FIELD

TAKE-OFF MINIMUMS: **Rwy 22**, 300-2 or std. w/ climb of 241' per NM to 500.

NOTE: **Rwy 4**, vehicles on roads beginning 199' from departure end of runway, 350' right of centerline, up to 15' AGL/102' MSL. Multiple poles beginning 434' from departure end of runway, 88' right of centerline, up to 31' AGL/100' MSL. Multiple trees beginning 1485' from departure end of runway, 46' right of centerline, up to 64' AGL/133' MSL. Tree 1509' from departure end of runway, 38' left of centerline, 47' AGL/116' MSL.

Rwy 15, fence 2' from departure end of runway, 411' left of centerline, 8' AGL/57' MSL. Multiple poles beginning 721' from departure end of runway, 183' left of centerline, up to 64' AGL/123' MSL. Multiple poles beginning 828' from departure end of runway, 514' right of centerline, up to 26' AGL/85' MSL. Multiple trees beginning 862' from departure end of runway, 275' left of centerline, up to 89' AGL/148' MSL. Multiple trees beginning 1357' from departure end of runway, 238' right of centerline, up to 94' AGL/153' MSL. **Rwy 22**, tree 1251' from departure end of runway, 786' right of centerline, 56' AGL/95' MSL. Multiple trees beginning 1323' from departure end of runway, 759' left of centerline, up to 90' AGL/129' MSL. Tower 1.6 NM from departure end of runway, 2373' left of centerline, 276' AGL/291' MSL. **Rwy 33**, multiple trees 10' from departure end of runway, 19' right of centerline, up to 139' AGL/158' MSL. Vehicle on road 352' from departure end of runway, 405' right of centerline, 15' AGL/59' MSL. Pole 888' from departure end of runway, 409' left of centerline, 19' AGL/58' MSL. Multiple trees beginning 1153' from departure end of runway, 245' left of centerline, up to 99' AGL/118' MSL.

ELKTON, MD

CECIL COUNTY

TAKE-OFF MINIMUMS: NOTE: **Rwy 13**, cross departure end of runway at or above 27' AGL/89' MSL. **Rwy 31**, 300-1½ or std. w/ min. climb of 290' per NM to 400.

DEPARTURE PROCEDURE: **Rwy 31**, climb heading 308° to 900 before turning left.

NOTE: **Rwy 13**, trees 185' from departure end of runway, 110' right of centerline, 50' AGL/113' MSL. Trees 325' from departure end of runway, 125' left of centerline, 75' AGL/138' MSL. **Rwy 31**, trees, 1350' from departure end of runway, on centerline, 115' AGL/221' MSL. Trees beginning 1050' from departure end of runway, 781' left to 781' right of centerline, up to 100' AGL/309' MSL.

FARMVILLE, VA

FARMVILLE RGNL (FVX)

ORIG 07354 (FAA)

NOTE: **Rwy 3**, tree 1335' from departure end of runway, 277' right of centerline, 59' AGL/476' MSL. **Rwy 21**, vehicle on road 18' from departure end of runway, 495' left of centerline, 15' AGL/425' MSL. Tree 675' from departure end of runway, 315' right of centerline, 42' AGL/452' MSL.

08 MAY 2008 to 05 JUN 2008

08 MAY 2008 to 05 JUN 2008

08101



TAKE-OFF MINIMUMS AND (OBSTACLE) DEPARTURE PROCEDURES



NE-3



08101

FORT MEADE (ODENTON), MD

TIPTON

NOTE: **Rwy 10**, cross departure end of runway at or above 17' AGL/167' MSL. **Rwy 10**, trees 1052' right of departure end of runway, 88' AGL/238' MSL.

FRANKLIN, VA

FRANKLIN MUNI-JOHN BEVERLY ROSE

TAKE-OFF MINIMUMS: **Rwy 22**, 500-1.
DEPARTURE PROCEDURE: **Rwy 14**, climb straight ahead to 500 before proceeding on course.

FREDERICK, MD

FREDERICK MUNI

TAKE-OFF MINIMUMS: **Rwy 12**, 500-3 or std. with a min. climb of 270' per NM to 1000.
DEPARTURE PROCEDURE: **Rwys 5, 23**, climb runway heading to 2000 before proceeding on course. **Rwy 30**, climbing right turn to intercept FDK VOR R-010 to 2400 before proceeding on course.

FREDERICKSBURG, VA

SHANNON

TAKE-OFF MINIMUMS: **Rwy 24**, 800-3 or std. with a min. climb of 290' per NM to 800.
DEPARTURE PROCEDURE: **Rwy 24**, climb to 800 via runway heading before proceeding on course.
NOTE: 744' tower 2.1 NM from departure end of Rwy 24.

FRIENDLY, MD

POTOMAC AIRFIELD

TAKE-OFF MINIMUMS: **Rwys 6, 24**, 300-1.
NOTE: **Rwy 6**, 50' AGL trees 300' left of departure end of runway. 75' AGL trees 320' right of departure end of runway. **Rwy 24**, 80' AGL trees 200' right of departure end of runway. 75' AGL trees 200' left of departure end of runway. 30' AGL hanger 200' from departure end of runway, 190' right of centerline.

FRONT ROYAL, VA

FRONTROYAL-WARREN COUNTY

TAKE-OFF MINIMUMS: **Rwy 9**, std. w/ min. climb of 409' per NM to 1100, or 2300-3 for climb in visual conditions. **Rwy 27**, NA-obstacles.
DEPARTURE PROCEDURE: **Rwy 9**, climbing left turn via MRB R-216 to MRB VORTAC before proceeding on course, do not exceed 180 knots until MRB VORTAC; or for climb in visual conditions: cross Front Royal-Warren County Airport at or above 2900 MSL before proceeding on course.
NOTE: **Rwy 9**, multiple trees beginning 148' from departure end of runway, 99' right of centerline, up to 100' AGL/939' MSL. Multiple trees beginning 182' from departure end of runway, 189' left of centerline, up to 100' AGL/854' MSL.

GAITHERSBURG, MD

MONTGOMERY COUNTY AIRPARK

TAKE-OFF MINIMUMS: NOTE: **Rwy 14**, 62' AGL trees 197' right of centerline. **Rwy 32**, 63' AGL trees 335' left of centerline.

GALAX-HILLSVILLE, VA

TWIN COUNTY

TAKE-OFF MINIMUMS: **Rwy 19**, 300-1 or std. with a min. climb of 240' per NM until passing 3000. **Rwy 1**, 300-1 or std. with a min. climb of 310' per NM until passing 3000.

GEORGETOWN, DE

SUSSEX COUNTY

TAKE-OFF MINIMUMS: **Rwys 4, 13, 22, 31**, 300-1.

GRUNDY, VA

GRUNDY MUNI

TAKE-OFF MINIMUMS: **Rwy 22**, 300-2 or std. with a min. climb of 240' per NM to 2700.

HAGERSTOWN, MD

HAGERSTOWN RGNL -RICHARD A. HENSON FIELD

TAKE-OFF MINIMUMS: **Rwy 2**, 300-1.
DEPARTURE PROCEDURE: **Rwy 9**, climbing left turn to 2500 via 040° heading to intercept the HGR R-084 before departing as cleared. **Rwys 2, 20**, climb to 2000 before turning eastbound.

HOT SPRINGS, VA

INGALLS FIELD

TAKE-OFF MINIMUMS: **Rwy 7**, 500-1 or std. with a min. climb of 320' per NM to 4400. **Rwy 25**, 600-1 or std. with a min. climb of 390' per NM to 5000.
DEPARTURE PROCEDURE: **Rwy 7**, climb runway heading to 4400 before proceeding on course. **Rwy 25**, climb runway heading to 5000 before proceeding on course.

INDIAN HEAD, MD

MARYLAND

TAKE-OFF MINIMUMS: **Rwy 36**, 300-1¼ or std. w/ min. climb of 360' per NM to 600.
NOTE: **Rwy 18**, trees abeam departure end of runway, 125' left of centerline, up to 100' AGL/256' MSL. Trees 269' from departure end of runway, on centerline, 100' AGL/256' MSL. Trees abeam departure end of runway, 125' right of centerline, up to 100' AGL/256' MSL. Tower 6170' from departure end of runway, 620' right of centerline, 190' AGL/384' MSL. **Rwy 36**, trees 258' from departure end of runway, 309' left of centerline, up to 100' AGL/271' MSL. Tree 567' from departure end of runway, 125' left of centerline, 60' AGL/230' MSL. Rising terrain beginning 73' from departure end of runway, 64' right of centerline, 180' MSL.

08 MAY 2008 to 05 JUN 2008

08 MAY 2008 to 05 JUN 2008

08101





08101

JONESVILLE, VA

LEE COUNTY

TAKE-OFF MINIMUMS: **Rwy 7**, std. w/ min. climb of 467' per NM to 3800, or 1900-3 for climb in visual conditions. **Rwy 25**, std. w/ min. climb of 442' per NM to 3500, or 1900-3 for climb in visual conditions.

DEPARTURE PROCEDURE: **Rwys 7, 25**, for climb in visual conditions cross Lee County Airport at or above 3200 before proceeding on course.

NOTE: **Rwy 7**, terrain 116' from departure end of runway, 72' right of centerline, 1439' MSL. Terrain 691' from departure end of runway, 53' right of centerline, 1459' MSL. Terrain 267' from departure end of runway, 190' left of centerline, 1439' MSL. Terrain 479' from departure end of runway, 68' left of centerline, 1459' MSL.

LANGLEY AFB (KLFJ)

HAMPTON, VA

..... Orig 07354

..... **Rwy 8**, 500-3*

* Or standard with minimum climb of 240 ft/NM to 700.

NOTE: Rwy 26, cross DER at or above 10' AGL/18' MSL.

TAKE-OFF OBSTACLES: **Rwy 8**, Boat 2261' from DER, 779' left of centerline, 60' AGL/80' MSL. Boat 2500' from DER, 59' left of centerline, 60' AGL/ 70' MSL. Vehicle on road 1051' from DER, 702' right of centerline, 15' AGL/43' MSL. Boat 2841' from DER, 641' right of centerline, 60' AGL/80' MSL. Multiple towers 2.0 NM from DER, 1.7 NM right of centerline, 503' AGL/511' MSL. Rwy 26, Tree 4050' from DER, 685' left of centerline, 100' AGL/ 120' MSL. Tree 4840' from DER, 687' left of centerline, 100' AGL/136' MSL. Tree 4044' from DER, 31' left of centerline, 101' AGL/113' MSL. Tree 4153' from DER, 342' right of centerline, 101' AGL/ 114' MSL. Tree 4037' from DER, 623' right of centerline, 101' AGL/110' MSL. Tree 4377' from DER, 435' right of centerline, 100' AGL/121' MSL. Tree 3805' from DER, 1184' right of centerline, 100' AGL/133' MSL.

LAUREL, DE

LAUREL

DEPARTURE PROCEDURE: **Rwys 15, 33**, climb runway heading to 1200 before proceeding on course.

LAWRENCEVILLE, VA

LAWRENCEVILLE/BRUNSWICK MUNI

TAKE-OFF MINIMUMS: **Rwys 6, 24**, NA.

NOTE: **Rwy 18**, trees 1654' from departure end of runway, 772' left of centerline, 88' AGL/407' MSL. Trees 200' from departure end of runway, on centerline, 22' AGL/321' MSL. **Rwy 36**, trees 1487' from departure end of runway, 20' left of centerline, 88' AGL/420' MSL. Trees 113' from departure end of runway, 372' right of centerline, 88' AGL/420' MSL.

LEESBURG, VA

LEESBURG EXECUTIVE

TAKE-OFF MINIMUMS: **Rwys 17, 35**, 300-1 or std. with a min. climb of 250' per NM until passing 1200.

LEONARDTOWN, MD

ST. MARY'S COUNTY RGNL

NOTES: **Rwy 11**, multiple trees beginning 88' from departure end of runway, 339' left of centerline, up to 80' AGL/205' MSL. Multiple trees beginning 61' from departure end of runway, 193' right of centerline up to 80' AGL/205' MSL. **Rwy 29**, multiple trees beginning 996' from departure end of runway, 227' left of centerline up to 79' AGL/221' MSL. Multiple trees beginning 596' from departure end of runway, 277' right of centerline up to 71' AGL/213' MSL. Multiple towers on buildings beginning 53' from departure end of runway, 400' right of centerline up to 26' AGL/168' MSL. Equipment on building 223' from departure end of runway, 449' right of centerline, 15' AGL/169' MSL. Tower 402' from departure end of runway, 399' right of centerline, 33' AGL/175' MSL. Fence 496' from departure end of runway, 241' right of centerline, 22' AGL/164' MSL.

LURAY, VA

LURAY CAVERNS

TAKE-OFF MINIMUMS: **Rwys 4, 22**, 1000-3
DEPARTURE PROCEDURE: Climb visually so as to cross airport at or above 2000, then continue climb to 5000 via LUA 215° bearing before proceeding on course.

LYNCHBURG, VA

FALWELL

TAKE-OFF MINIMUMS: **Rwy 10**, 1100-2½ for climb in visual conditions. **Rwy 28**, NA-obstacle.
DEPARTURE PROCEDURE: **Rwy 10**, for climb in visual conditions: cross Falwell Airport at or above 1900 before proceeding on course.
NOTE: **Rwy 10**, multiple trees 9' from departure end of runway, 87' right of centerline, up to 100' AGL/899' MSL. Multiple power lines 2896' from departure end of runway, 1192' right of centerline, up to 149' AGL/968' MSL.

08 MAY 2008 to 05 JUN 2008

08 MAY 2008 to 05 JUN 2008

08101





LYNCHBURG, VA (CON'T)

LYNCHBURG RGNL/PRESTON GLENN FIELD (LYH)

AMDT 8 08073 (FAA)

TAKE-OFF MINIMUMS: **Rwy 17**, 300-2¼ or std. w/ min. climb of 232' per NM to 1500. **Rwy 35**, std. w/ min. climb of 350' per NM to 3000, or 1700-3 for climb in visual conditions.

DEPARTURE PROCEDURE: **Rwy 4**, climb heading 036° to 2200 before proceeding on course. **Rwy 17**, climb heading 169° to 1800 before turning right. **Rwy 22**, climb heading 216° to 1800 before turning right. **Rwy 35**, climb heading 349° to 3000 before turning left, or for climb in visual conditions: cross Lynchburg Rgnl/Preston Glenn Field at or above 2500' MSL before proceeding on course.

NOTE: **Rwy 4**, trees beginning 2029' from departure end of runway, 62' right of centerline up to 81' AGL/999' MSL. Trees beginning 1422' from departure end of runway, 3' left of centerline up to 76' AGL/995' MSL. Poles beginning 427' from departure end of runway, 483' right of centerline up to 44' AGL/1044' MSL. Obstruction lights on fence beginning 2' from departure end of runway, 500' right of centerline up to 30' AGL/948' MSL. Antenna on building 395' from departure end of runway, 277' right of centerline 15' AGL/954' MSL. Light 606' from departure end of runway, 599' right of centerline, 18' AGL/982' MSL. Building 400' from departure end of runway, 345' right of centerline, 12' AGL/951' MSL. **Rwy 17**, trees beginning 284' from departure end of runway, 77' left of centerline up to 277' AGL/1195' MSL. Trees beginning 265' from departure end of runway, 178' right of centerline up to 57' AGL/969' MSL. Obstruction light on pole 9326' from departure end of runway 333' left of centerline, 270' AGL/1188 MSL. **Rwy 22**, trees beginning 274' from departure end of runway, 245' right of centerline up to 41' AGL/979' MSL. Trees beginning 2616' from departure end of runway, 206' left of centerline up to 41' AGL/ 979' MSL. Poles beginning 2872' from departure end of runway, 603' right of centerline up to 44' AGL/982' MSL. **Rwy 35**, trees beginning 2955' from departure end of runway, 140' right of centerline up to 96' AGL/ 1014' MSL. Trees beginning 722' from departure end of runway, 71' left of centerline up to 119' AGL/1037' MSL. Pole 36' from departure end of runway 98' left of centerline, 25' AGL/ 943' MSL.

MANASSAS, VA

MANASSAS RGNL/HARRY P. DAVIS FIELD

NOTE: **Rwy 16R**, terrain 64' from departure end of runway, 136' right of centerline, 179' MSL. Numerous trees beginning 242' from departure end of runway, 53' right of centerline up to 100' AGL/279' MSL. Vehicle on road 886' from departure end of runway, 463' right of centerline, 15' AGL/214' MSL. Terrain 33' from departure end of runway, 427' left of centerline, 179' MSL. Numerous trees beginning 688' from departure end of runway, 40' left of centerline, up to 100' AGL/279' MSL. **Rwy 16L**, terrain 56' from departure end of runway, 177' left of centerline, 179' MSL. Numerous trees beginning 1911' from departure end of runway, 158' left of centerline, up to 83' AGL/292' MSL. Terrain 87' from departure end of runway, 386' right of centerline, 179' MSL. Numerous trees beginning 2559' from departure end of runway, 29' right of centerline, up to 100' AGL/273' MSL. **Rwy 34R**, sign 70' from departure end of runway, 91' right of centerline, 6' AGL/ 196' MSL. Terrain beginning 23' from departure end of runway, 222' right of centerline, up to 199' MSL. Vehicle on road 198' from departure end of runway, 9' right of centerline, 15' AGL/214' MSL. Numerous trees beginning 1860' from departure end of runway, 828' right of centerline, 70' AGL/280' MSL. Numerous trees beginning 2875' from departure end of runway, 484' left of centerline, up to 27' AGL/266' MSL. **Rwy 34L**, terrain 107' from departure end of runway, 409' right of centerline, 189' MSL. Numerous trees beginning 2802' from departure end of runway, 251' right of centerline, up to 27' AGL/266' MSL. Terrain 76' from departure end of runway, 154' left of centerline, 189' MSL. Vehicle on road 366' from departure end of runway, 19' left of centerline, 15' AGL/204' MSL. Numerous trees beginning 1603' from departure end of runway, 249' left of centerline, up to 43' AGL/252' MSL. Tower 3398' from departure end of runway, 1102' left of centerline, 68' AGL/274' MSL.

MARION/WYTHEVILLE, VA

MOUNTAIN EMPIRE

TAKE-OFF MINIMUMS: **Rwy 8**, 300-1. **Rwy 26**, 800-1. DEPARTURE PROCEDURE: **Rwy 8**, climb direct to MK NDB then climb to 5300 via 073° bearing before proceeding on course. **Rwy 26**, climb to 5400 via 253° bearing from MK NDB before proceeding on course.

MARTINSVILLE, VA

BLUE RIDGE

TAKE-OFF MINIMUMS: **Rwy 12**, 300-1 or std. with a min. climb of 240' per NM to 1100. **Rwy 30**, 300-1 or std. with a min. climb of 370' per NM to 1100. DEPARTURE PROCEDURE: **Rwy 12**, climb direct BALESLOM, climb in BALESLOM holding pattern (SE, right turns, 304° inbound) to 4000 before proceeding on course. **Rwy 30**, climbing right turn direct BALESLOM, climb in BALESLOM holding pattern (SE, right turns, 304° inbound) to 4000 before proceeding on course.

08 MAY 2008 to 05 JUN 2008

08 MAY 2008 to 05 JUN 2008



**MELFA, VA****ACCOMACK COUNTY**

NOTE: **Rwy 3**, multiple trees beginning 41' from departure end of runway, 221' right of centerline, up to 84' AGL/128' MSL. Truck on road 204' from departure end of runway, 231' left of centerline, 15' AGL/61' MSL. Multiple trees beginning 249' from departure end of runway, 14' left of centerline, up to 106' AGL/155' MSL. Truck on road 494' from departure end of runway, 228' left of centerline, 15' AGL/62' MSL. Rod on obstruction light tower 862' from departure end of runway, 402' left of centerline, 55' AGL/99' MSL. **Rwy 21**, multiple trees beginning 27' from departure end of runway, 395' right of centerline, up to 91' AGL/135' MSL. Multiple trees 504' from departure end of runway, 403' left of centerline, up to 110' AGL/144' MSL.

MIDDLETOWN, DE**SUMMIT**

TAKE-OFF MINIMUMS: **Rwy 35**, 300-1, or std. with a min. climb of 280' per NM to 400.

MITCHELLVILLE, MD**FREEWAY**

TAKE-OFF MINIMUMS: **Rwy 18**, 300-1 or std. with a min. climb of 295' per NM to 500. **Rwy 36**, 300-1 or std. with a min. climb of 500' per NM to 600. NOTE: **Rwy 18**, trees 328' from departure end of runway, 20' AGL/178' MSL. Trees 838' from departure end of runway, 337' left of centerline, 50' AGL/220' MSL. **Rwy 36**, cross departure end of runway at or above 35' AGL/203' MSL. Road/vehicle, 231' from departure end of runway, 17' AGL/185' MSL. Trees 332' from departure end of runway, 20' AGL/188' MSL. Power poles and lines crossing centerline, 2280' from departure end of runway, 186' AGL/345' MSL.

MONETA, VA**SMITH MOUNTAIN LAKE**

TAKE-OFF MINIMUMS: **Rwys 5, 23**, 300-1. DEPARTURE PROCEDURE: **Rwys 5, 23**, climb straight ahead to 1600 before proceeding on course.

NEWPORT NEWS, VA**NEWPORT NEWS/WILLIAMSBURG INTL**

TAKE-OFF MINIMUMS: **Rwy 20**, 300-1¼ or standard with a minimum climb of 255' per NM to 300.

NOTE: **Rwy 2**, bush 295' from departure end of runway, 291' right of centerline 22' AGL/62' MSL. Tree 937' from departure end of runway, 603' left of centerline 81' AGL/131' MSL. Pole 1221' from departure end of runway, 487' right of centerline 31' AGL/81' MSL. Tree 1275' from departure end of runway, 517' left of centerline 79' AGL/132' MSL. Multiple trees beginning 1554' from departure end of runway, 603' left of centerline up to 88' AGL/141' MSL. Tree 1686' from departure end of runway, 428' right of centerline 61' AGL/114' MSL. Tree 1849' from departure end of runway, 598' right of centerline 72' AGL/125' MSL. T-L tower 3351' from departure end of runway, 2008' left of centerline 109' AGL/161' MSL. **Rwy 7**, tree 371' from departure end of runway, 588' left of centerline 36' AGL/73' MSL. T-L tower 4120' from departure end of runway, 1324' right of centerline 93' AGL/116' MSL. T-L tower 5625' from departure end of runway, 1345' left of centerline 133' AGL/191' MSL. **Rwy 20**, bush 96' from departure end of runway, 293' left of centerline 22' AGL/52' MSL. Stack 5977' from departure end of runway, 598' left of centerline 186' AGL/227' MSL. **Rwy 25**, tree 694' from departure end of runway, 549' right of centerline 42' AGL/65' MSL. Tree 1020' from departure end of runway, 703' right of centerline 23' AGL/97' MSL. Tree 1622' from departure end of runway, 529' left of centerline 59' AGL/79' MSL. Tree 2654' from departure end of runway, 335' right of centerline 86' AGL/106' MSL. Tree 3435' from departure end of runway, 1125' right of centerline 116' AGL/139' MSL.

NORFOLK, VA**CHESAPEAKE RGNL**

DEPARTURE PROCEDURE: **Rwys 5, 23**, climb runway heading to 500 before proceeding on course. NOTE: **Rwy 5**, cross departure end of runway at or above 27' AGL/48' MSL. Trees 2200' from departure end of runway, 545' left of centerline, 81' AGL/102' MSL. **Rwy 23**, cross departure end of runway at or above 25' AGL/43' MSL. Trees 1600' from departure end of runway, 710' right of centerline, 62' AGL/82' MSL.





NORFOLK, VA (CON'T)
HAMPTON ROADS EXECUTIVE

TAKE-OFF MINIMUMS: **Rwy 10**, std. w/min. climb of 217' per NM to 700, or alternatively w/ std. takeoff minimums and a normal 200' per NM climb gradient, takeoff must occur no later than 2100' prior to departure end of runway or 1700'-2½ for climb in visual conditions.

DEPARTURE PROCEDURE: **Rwy 2**, climb heading 019° to 1600 before turning west. **Rwy 10**, climb heading 102° to 900 before proceeding on course, or for climb in visual conditions, cross Hampton Roads Executive Airport at or above 1600 before proceeding on course. **Rwy 20**, climb heading 199° to 1000 before turning North. **Rwy 28**, climb heading 282° to 1500 before turning North.

NOTE: **Rwy 2**, multiple trees beginning 693' from departure end of runway, 286' left of centerline, up to 100' AGL/124' MSL. Multiple trees beginning 917' from departure end of runway, 422' right of centerline, up to 100' AGL/124' MSL. **Rwy 10**, trees 688' from departure end of runway, 374' left of centerline, 61' AGL/85' MSL. Vehicle on road and multiple trees beginning 750' from departure end of runway, 359' right of centerline, up to 100' AGL/124' MSL. Tower 1.1 NM from departure end of runway, 1424' left of centerline, 175' AGL/192' MSL. **Rwy 20**, vehicle on road and multiple trees beginning 199' from departure end of runway, 250' left of centerline, up to 100' AGL/124' MSL. Vehicle on road and multiple trees beginning 595' from departure end of runway, 8' right of centerline, up to 100' AGL/124' MSL. **Rwy 28**, multiple trees beginning 2711' from departure end of runway, 366' left of centerline, up to 100' AGL/124' MSL. Vehicle on road 3' from departure end of runway, 112' right of centerline, 17' AGL/34' MSL. Multiple trees beginning 2595' from departure end of runway, 362' right of centerline, up to 100' AGL/124' MSL.

NORFOLK, VA (CON'T)
NORFOLK INTL

NOTES: **Rwy 5**, mobile crane 4091' from departure end of runway, 1249' right of centerline, 150' AGL/163' MSL. Multiple ship masts beginning 2761' from departure end of runway, 22' right of centerline, up to 100' AGL/100' MSL. Multiple ship masts beginning 2564' from departure end of runway, 133' left of centerline, up to 100' AGL/100' MSL. Obstruction light on pole 3978' from departure end of runway, 931' left of centerline, 138' AGL/146' MSL. Multiple towers beginning 4045' from departure end of runway, 982' left of centerline, up to 138' AGL/146' MSL. Obstruction light on pole 2898' from departure end of runway, 811' right of centerline, 84' AGL/98' MSL. Antenna 4115' from departure end of runway, 1585' right of centerline, 117' AGL/131' MSL. Tower 2974' from departure end of runway, 772' right of centerline, 90' AGL/98' MSL. Obstruction light on pole 2696' from departure end of runway, 1063' left of centerline, 84' AGL/91' MSL. Bush 29' from departure end of runway, 307' right of centerline, 6' AGL/20' MSL. Tree 1459' from departure end of runway, 159' left of centerline, 41' AGL/55' MSL. Tower 2938' from departure end of runway, 1254' left of centerline, 89' AGL/94' MSL. Tree 1399' from departure end of runway, 201' right of centerline, 38' AGL/52' MSL. Sign 82' from departure end of runway, 301' left of centerline, 2' AGL/19' MSL. Terrain 23' from departure end of runway, 227' left of centerline, 0' AGL/17' MSL. **Rwy 14**, tree 2541' from departure end of runway, 432' right of centerline, 101' AGL/121' MSL. Multiple trees beginning 443' from departure end of runway, 398' left of centerline, up to 75' AGL/95' MSL. Pole 1410' from departure end of runway, 254' right of centerline, 45' AGL/62' MSL. **Rwy 23**, rod on obstruction light pole 1012' from departure end of runway, 650' right of centerline, 56' AGL/73' MSL. Multiple trees beginning 619' from departure end of runway, 584' left of centerline, up to 81' AGL/98' MSL. Obstruction light on pole 1433' from departure end of runway, 738' left of centerline, 54' AGL/71' MSL. Multiple trees beginning 323' from departure end of runway, 504' right of centerline, up to 26' AGL/43' MSL. Pole 2165' from departure end of runway, 840' right of centerline, 57' AGL/74' MSL. **Rwy 32**, multiple trees beginning 17' from departure end of runway, 460' right of centerline, up to 81' AGL/98' MSL. Multiple trees and poles beginning 60' from departure end of runway, 333' left of centerline, up to 87' AGL/92' MSL. Road 207' from departure end of runway, 231' right of centerline, 12' AGL/29' MSL. Multiple obstruction lights on towers 201' from departure end of runway, 135' left of centerline, up to 12' AGL/27' MSL.

08 MAY 2008 to 05 JUN 2008

08 MAY 2008 to 05 JUN 2008

NORFOLKNS (CHAMBERS FIELD)
(KNGU)

NORFOLK, VA

Diverse departure not authorized.
 TAKE-OFF OBSTACLES: **Rwy 10**: Trees with a maximum height of 88' within 1420' of departure end of rwy. 47' pole 443' from departure end of rwy. 22' road and vehicles 205' from departure end of rwy. Cross departure end of rwy at or above 35' AGL/48' MSL.





TAKE-OFF MINIMUMS AND (OBSTACLE) DEPARTURE PROCEDURES

08101

OAKLAND, MD

GARRETT COUNTY (2G4)
ORIG 08101 (FAA)

NOTE: **Rwy 9**, Multiple trees beginning 75' from departure end of runway, 94' left of centerline, up to 100' AGL/2939' MSL. Multiple trees beginning 76' from departure end of runway, 47' right of centerline, up to 100' AGL/2939' MSL. **Rwy 27**, Multiple trees beginning 15' from departure end of runway, 334' left of centerline, up to 100' AGL/3019' MSL. Multiple trees beginning 19' from departure end of runway, 107' right of centerline, up to 100' AGL/3019' MSL.

OCEAN CITY, MD

OCEAN CITY MUNI

TAKE-OFF MINIMUMS: **Rwys 2, 32**, 400-2 or std. with a min. climb of 260' per NM to 500.

OCEANA NAS (APOLLO SOUCEK FIELD) (KNTU)

VIRGINIA BEACH, VA. 07214

TAKE-OFF OBSTACLES: **Rwy 5L**, Trees 3706' from DER, 97' right of centerline, 115' MSL. **Rwy 5R**, Trees 3706' from DER, 603' left of centerline, 115' MSL.

ORANGE, VA

ORANGE COUNTY

TAKE-OFF MINIMUMS: **Rwy 8**, 300-1.
DEPARTURE PROCEDURE: **Rwys 8, 26**, climb runway heading to 1500 before turning.

PATUXENT RIVER NAS (TRAPNELL FIELD), (KNHK)

PATUXENT RIVER, MD 06187

Rwy 6, Obstacle identification surface begins 15' above DER.
Rwy 14, Obstacle identification surface begins 35' above DER.
Rwy 20, Obstacle identification surface begins 20' above DER.
Rwy 24, Obstacle identification surface begins 35' above DER.
TAKE-OFF OBSTACLES: **Rwy 6**, pole 63' AGL/83' MSL 1967' from DER, 981' left of centerline.
Rwy 14, trees, 42' AGL/57' MSL 190' from DER, 223' left of centerline; two lane road crossing rwy thld, max ht 17' AGL/33' MSL, 193' from DER; Pole, 34' AGL/50' MSL, 315' from DER, 198' left of centerline; Trees, 43' AGL/59' MSL 520' from DER, 637' right of centerline.
Rwy 20, trees, 44' AGL/81' MSL 1555' from DER, 845' right of centerline; Trees, 56' AGL/93' MSL 2057' from DER, 778' right of centerline; Trees, 67' AGL/104' MSL 2077' from DER, 818' right of centerline; Trees, 93' AGL/130' MSL 3029' from DER, 32' left of centerline.
Rwy 24, trees, 43' AGL/81' MSL 1682' from DER, 582' left of centerline; trees, 57' AGL/95' MSL 2015' from DER, 965' left of centerline; trees, 66' AGL/104' MSL 2056' from DER, 948' left of centerline.

PETERSBURG, VA

DINWIDDIE COUNTY (PTB)
ORIG 07354 (FAA)

TAKE-OFF MINIMUMS: **Rwys 32, 14**, NA-obstacles.
NOTE: **Rwy 5**, numerous trees beginning 911' from departure end of runway, 551' left of centerline, up to 65' AGL/254' MSL. Fence 161' from departure end of runway, 472' right of centerline, 7' AGL/196' MSL. Tree 1031' from departure end of runway, 690' right of centerline, 57' AGL/256' MSL. **Rwy 23**, numerous trees beginning 2615' from departure end of runway, 69' right of centerline, up to 80' AGL/289' MSL. Fence 10' from departure end of runway, 476' left of centerline, 10' AGL/199' MSL. Numerous trees beginning 819' from departure end of runway, 528' left of centerline, up to 72' AGL/281' MSL.

PHILLIPS AAF (KAPG)

ABERDEEN PROVING GROUND, MD . . . 07270

TAKE-OFF OBSTACLES: **Rwy 4**, vehicle on road 1059' from DER, on centerline, 10' AGL/86' MSL. Tree 1126' from DER, 118' left of centerline, 29' AGL/88' MSL. **Rwy 22**, vehicle on road 234' from DER, 27' right of centerline, 10' AGL/49' MSL. Multiple trees beginning 398' from DER, 311' right of centerline, up to 50' AGL/89' MSL. Tree 1094' from DER, 49' left of centerline, 43' AGL/62' MSL.

QUANTICO MCAF (TURNER FIELD) (NYG)

QUANTICO, VA 07046

..... **Rwy 2**, 400-1+
* Or standard with minimum climb of 410' NM to 300.
TAKE-OFF OBSTACLES: **Rwy 2**: Smokestack 2323' from DER, 405' left of centerline, 78' AGL/99' MSL; trees 4088' from DER, 809' left of centerline, 75' AGL/253' MSL; trees 5777' from DER, 503' right of centerline, 75' AGL/194' MSL; trees 8485' from DER, 904' right of centerline, 75' AGL/234' MSL.
Rwy 20: Traverse way 81' from DER, 11' AGL.

QUINTON, VA

NEW KENT COUNTY

NOTE: **Rwy 10**, trees beginning 358' from departure end of runway, 6' left of centerline, up to 100' AGL/169' MSL. Trees beginning 994' from departure end of runway, 602' right of centerline, up to 100' AGL/209' MSL. Trees beginning 1396' from departure end of runway, 389' left of centerline, up to 100' AGL/209' MSL. Trees beginning 3422' from departure end of runway, left and right of centerline, up to 100' AGL/239' MSL. **Rwy 28**, trees beginning 345' from departure end of runway, 296' right of centerline, up to 100' AGL/209' MSL. Trees beginning 367' from departure end of runway, 527' left of centerline, up to 100' AGL/209' MSL. Trees beginning 2134' from departure end of runway, left and right of centerline, 100' AGL/239' MSL.

08 MAY 2008 to 05 JUN 2008

08 MAY 2008 to 05 JUN 2008



TAKE-OFF MINIMUMS AND (OBSTACLE) DEPARTURE PROCEDURES



NE-3



08101

C11

RICHLANDS, VA

TAZEWELL COUNTY

TAKE-OFF MINIMUMS: **Rwy 7**, 300-1 or std. with a min. climb of 430' per NM to 3000. **Rwy 25**, 300-1 or std. with a min. climb of 280' per NM to 2900.

DEPARTURE PROCEDURE: **Rwy 7**, climb runway heading to 4700 before proceeding southbound.

Rwy 25, climb runway heading to 4100 before proceeding southbound.

RICHMOND, VA

CHESTERFIELD COUNTY

TAKE-OFF MINIMUMS: **Rwy 15**, 800-1 or std. with a min. climb of 280' per NM to 1200. **Rwy 33**, 1200-1, or std. with a min. climb of 220' per NM to 1700.

DEPARTURE PROCEDURE: **Rwy 15**, climb runway heading to 1200' before proceeding on course.

Rwy 33, climb runway heading to 1700' before proceeding on course.

NOTE: **Rwy 15**, 18' AGL pole 1315' from departure end of runway, 304' left of centerline. **Rwy 33**, 84' AGL tree 2399' from departure end of runway, 84' left of centerline.

RICHMOND, VA (CON'T)

RICHMOND INTL

NOTE: **Rwy 2**, cross departure end of runway at or above 30' AGL/195' MSL. **Rwy 7**, cross departure end of runway at or above 34' AGL/223' MSL. **Rwy 16**, cross departure end of runway at or above 22' AGL/183' MSL.

Rwy 20, cross departure end of runway at or above 35' AGL/193' MSL. **Rwy 25**, cross departure end of runway at or above 20' AGL/176' MSL. **Rwy 34**, cross departure end of runway at or above 10' AGL/177' MSL.

RIDGELY, MD

RIDGELY AIRPARK

NOTE: **Rwy 12**, multiple trees beginning 592' from departure end of runway, 6' left of centerline, up to 100' AGL/160' MSL. Multiple trees beginning 239' from departure end of runway, 338' right of centerline, up to 100' AGL/160' MSL.

ROANOKE, VA

ROANOKE RGNL/ WOODRUM FIELD

TAKE-OFF MINIMUMS: **Rwys 6, 33**, NA - obstacles. DEPARTURE PROCEDURE: **Rwy 15**, climb via heading 154° to intercept the ROA VORTAC R-122 to 4000 before proceeding on course. **Rwy 24**, use DIXXY DEPARTURE.

NOTE: **Rwy 15**, trees 1.18 NM from departure end of runway, 2122' left of centerline, 60' AGL/1321' MSL.

SALISBURY, MD

SALISBURY-OCEAN CITY WICOMICO RGNL (SBY)

ORIG 07354 (FAA)

NOTE: **Rwy 5**, trees and antennas beginning 961' from departure end of runway, 49' left of centerline, up to 83' AGL/135' MSL. Trees beginning 2769' from departure end of runway, 5' right of centerline, up to 85' AGL/136' MSL. **Rwy 23**, trees beginning 514' from departure end of runway, 518' left of centerline, up to 68' AGL/118' MSL. Trees and antenna beginning 774' from departure end of runway, 303' right of centerline, up to 76' AGL/127' MSL. Trees beginning 2835' from departure end of runway, 186' right of centerline, up to 75' AGL/125' MSL. **Rwy 32**, trailer, hangar and obstruction light beginning 120' from departure end of runway, 509' left of centerline, up to 23' AGL/72' MSL. Trees beginning 2215' from departure end of runway, 140' left of centerline, up to 79' AGL/128' MSL.

SALUDA, VA

HUMMEL FIELD

DEPARTURE PROCEDURE: **Rwys 1, 19**, climb runway heading to 1000 before turning on course.

NOTE: **Rwy 1**, 23' AGL tree left of departure end of runway, 65' AGL tree 663' from departure end of runway, 129' left of centerline. **Rwy 19**, 26' AGL tree 237' from departure end of runway, 116' right of centerline.

SOUTH BOSTON, VA

WILLIAM M. TUCK

TAKE-OFF MINIMUMS: **Rwy 1**, 300-1. **Rwys 5, 23**, NA. NOTE: **Rwy 1**, 72' AGL tower 324' from departure end of runway, 283' left of runway centerline.

SOUTH HILL, VA

MECKLENBURG-BRUNSWICK RGNL

TAKE-OFF MINIMUMS: **Rwy 1**, 300-1 or std. with a min. climb of 250' per NM to 1000. **Rwy 19**, 300-1 or std. with a min. climb of 370' per NM to 1000'

DEPARTURE PROCEDURE: **Rwys 1, 19**, climb runway heading to 1000 before proceeding on course.

STAFFORD, VA

STAFFORD RGNL

DEPARTURE PROCEDURE: **Rwy 15**, climbing left turn to 2000, intercept and proceed via BRV R-310 to BRV VORTAC, before proceeding on course. **Rwy 33**, climbing left turn to 2000, intercept and proceed via BRV R-306 to BRV VORTAC, before proceeding on course. NOTE: **Rwy 33**, cross departure end of runway at or above 34' AGL/246' MSL.

STAUNTON-WAYNESBORO-HARRISONBURG, VA

SHENANDOAH VALLEY RGNL

DEPARTURE PROCEDURE: **Rwy 5**, climbing left turn direct STAUT LOM. **Rwy 23**, climb direct STAUT LOM. All aircraft cross STAUT LOM at or above 4500, if not at 4500 continue climb in STAUT holding pattern (SW, left turns, 045° inbound) to 4500 before proceeding on course.

08 MAY 2008 to 05 JUN 2008

08 MAY 2008 to 05 JUN 2008

08101



NE-3

C11



TAKE-OFF MINIMUMS AND (OBSTACLE) DEPARTURE PROCEDURES



08101

STEVENSVILLE, MD

BAY BRIDGE

TAKE-OFF MINIMUMS: **Rwy 29**, 500-3 or std. w/ min. climb of 317' per NM to 800.

NOTE: **Rwy 11**, road 354' from departure end of runway, on centerline, 17' AGL/35' MSL. Multiple trees beginning 1471' from departure end of runway, 32' left of centerline, up to 100' AGL/119' MSL. Multiple trees beginning 1485' from departure end of runway, 16' left of centerline, up to 100' AGL/119' MSL. **Rwy 29**, twin bridges 2.25 NM from departure end of runway, 2767' right of centerline, 410' AGL/410' MSL.

SUFFOLK, VA

SUFFOLK EXECUTIVE

TAKE-OFF MINIMUMS: **Rwys 4, 7, 22**, 300-1. **Rwy 25**, 300-1 or std. w/ a min. climb of 260' per NM to 300.

Alternatively, with standard takeoff minimums and a normal 200' /NM climb gradient, takeoff must occur no later than 1700' prior to departure end of runway.

NOTE: **Rwy 4**, trees 1050' from departure end of runway, 250' left of centerline, up to 100' AGL/169' MSL. Trees 1076' from departure end of runway, 105' left of centerline, up to 100' AGL/169' MSL. Powerline 1698' from departure end of runway, 825' right of centerline, 105' AGL/169' MSL. Powerline 3056' from departure end of runway, 524' right of centerline, 105' AGL/174' MSL. **Rwy 7**, trees 1143' from departure end of runway, 688' left of centerline, up to 100' AGL/169' MSL. Powerline 1211' from departure end of runway, 717' right of centerline, 105' AGL/169' MSL. Powerline 2176' from departure end of runway, 259' left of centerline, 105' AGL/169' MSL. Trees 2430' from departure end of runway, 118' right of centerline, up to 100' AGL/169' MSL. Powerline 3140' from departure end of runway, 1263' left of centerline, 105' AGL/174' MSL. **Rwy 22**, road 536' from departure end of runway, 62' left of centerline, 15' AGL/84' MSL. Trees 1403' from departure end of runway, 765' left of centerline, up to 100' AGL/169' MSL. Trees 3595' from departure end of runway, 792' right of centerline, up to 100' AGL/174' MSL. **Rwy 25**, road 198' from departure end of runway, 33' right of centerline, 15' AGL/89' MSL. Trees 805' from departure end of runway, 423' right of centerline, up to 100' AGL/169' MSL. Trees 3258' from departure end of runway, 57' right of centerline, up to 100' AGL/174' MSL.

TAPPAHANNOCK, VA

TAPPAHANNOCK-ESSEX COUNTY

TAKE-OFF MINIMUMS: **Rwy 10**, 300-1½ or std. w/ min. climb of 303' per NM to 500. **Rwy 28**, 300-1 or std. w/ min. climb of 366' per NM to 500.

NOTE: **Rwy 10**, terrain 6' from departure end of runway, 20' left of centerline, up to 135' MSL. Terrain 29' from departure end of runway, 281' left of centerline, up to 139' MSL. **Rwy 28**, terrain beginning 12' from departure end of runway, 5' right of centerline, up to 151' MSL.

WAKEFIELD, VA

WAKEFIELD MUNI

DEPARTURE PROCEDURE: Climb straight ahead to 500 before proceeding on course.

WASHINGTON, DC

RONALD REAGAN WASHINGTON NATIONAL

TAKE-OFF MINIMUMS: **Rwy 22**, 400-2½ or std. with a min. climb of 210' per NM to 500. **Rwy 33**, 700-3 or std. with a min. climb of 260' per NM to 700. **Rwy 1**, 600-2 or std. with a min. climb of 370' per NM to 700.

DEPARTURE PROCEDURE: **Rwy 1**, left turn as soon as practicable, intercept DCA R-328. Climb to 5000 or as assigned. **Rwy 19**, climb heading 184° to 500 before turning right. **Rwy 33**, intercept DCA R-328. Climb to 5000 or as assigned.

NOTE: **Prohibited area, P-56, 1.5 NM north of airport.**

WESTMINSTER, MD

CARROLL COUNTY RGNL/JACK B. POAGE FIELD

TAKE-OFF MINIMUMS: **Rwy 16**, 400-1 or std. with a min. climb of 210' per NM to 1300. **Rwy 34**, 300-1 or std. with a min. climb of 320' per NM to 1000.

NOTE: **Rwy 16**, 87' AGL trees 644' from departure end of runway. **Rwy 34**, 102' AGL trees 116' from departure end of runway, 220' right of centerline.

WILLIAMSBURG, VA

WILLIAMSBURG-JAMESTOWN

TAKE-OFF MINIMUMS: **Rwy 31**, 300-1.

08 MAY 2008 to 05 JUN 2008

08 MAY 2008 to 05 JUN 2008

08101



TAKE-OFF MINIMUMS AND (OBSTACLE) DEPARTURE PROCEDURES



NE-3



08101

WILMINGTON, DE**NEW CASTLE**

TAKE-OFF MINIMUMS: **Rwy 19**, 300-1 or std. w/ min. climb of 266' per NM to 300.

NOTE: **Rwy 1**, multiple trees beginning 751' from departure end of runway, 32' left of centerline, up to 59' AGL/120' MSL, tree 1219' from departure end of runway, 482' right of centerline, 57' AGL/118' MSL, bush 118' from departure end of runway, 385' left of centerline, 4' AGL/65' MSL. **Rwy 9**, multiple trees beginning 1229' from departure end of runway, 30' right of centerline up to 62' AGL/133' MSL, tree 975' from departure end of runway, 66' left of centerline, 53' AGL/124' MSL, light pole 948' from departure end of runway, 596' right of centerline, 44' AGL/115' MSL, tree 1740' from departure end of runway, 458' left of centerline, 83' AGL/134' MSL, light pole 945' from departure end of runway, 316' right of centerline, 38' AGL/109' MSL, rod on building 916' from departure end of runway, 457' left of centerline, 29' AGL/100' MSL. **Rwy 14**, obstacle light 553' from departure end of runway, 440' left of centerline, 29' AGL/103' MSL, rod on obstacle light 606' from departure end of runway, 615' left of centerline, 19' AGL/93' MSL. **Rwy 19**, antenna on obstruction light tower 4469' from departure end of runway, 1684' right of centerline, 153' AGL/228' MSL, tree 1575' from departure end of runway, 850' right of centerline, 45' AGL/120' MSL, obstruction light on sign 971' from departure end of runway, 448' left of centerline, 28' AGL/103' MSL. **Rwy 27**, tree 697' from departure end of runway, 533' left of centerline, 68' AGL/147' MSL. Tree 1110' from departure end of runway, 584' right of centerline, 38' AGL/117' MSL, pole 793' from departure end of runway, 615' right of centerline, 28' AGL/107' MSL, bush 408' from departure end of runway, 415' left of centerline, 12' AGL/91' MSL. **Rwy 32**, tree 711' from departure end of runway, 207' right of centerline, 29' AGL/104' MSL, tree 1162' from departure end of runway, 83' right of centerline, 32' AGL/107' MSL.

WINCHESTER, VA**WINCHESTER RGNL**

TAKE-OFF MINIMUMS: **Rwy 32**, 800-2 or std. with a min. climb of 210' per NM to 1700.

DEPARTURE PROCEDURE: **Rwy 32**, climb runway heading to 1700 before turning on course.

WISE, VA**LONESOME PINE**

TAKE-OFF MINIMUMS: **Rwy 24**, 1800-3 or std. with a min. climb of 400' per NM to 4700.

DEPARTURE PROCEDURE: **Rwy 6**, climb on runway heading to 3800 before proceeding on course.

Rwy 24, climb on runway heading to 4500 before proceeding on course.

08 MAY 2008 to 05 JUN 2008

08 MAY 2008 to 05 JUN 2008

08101



NE-3